



Picture may vary from actual product

Power.Gate

The universal multi-talent among parking columns offers comprehensive possibilities for the ticketing sector with the most modern and diverse ticket technology. Expand your business models; become part of urban solutions. Power.Gate will support you at its best!

Your Business Card

- High-Quality Design
High-class materials and glowing features blend elegantly into all types of architecture.
- Professional Image
Bi-directional video communication provides your company with a face.
- Make a Lasting Impression
Expert-optimized operational guidance for look and sound provide positive user experiences.

Marketing Terminal with Ticketing

- Comprehensive Advertising Opportunities
Get your equipment financed.
- Professional Image
A back-glowing, bright and high-resolution display effectively draws attention to logos, images and promo videos.

Optimize Your Investment

- Suitable for Every Budget
A customized solution for every application.
- Protect Your Investment
Future-proof due to flexible options for expansions and installations.
- Save Money on Your Expenditures
Smooth investment expansion and renewals thanks to the random miscibility of SKIDATA parking columns.

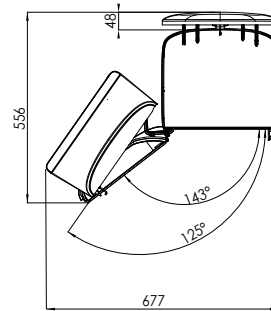
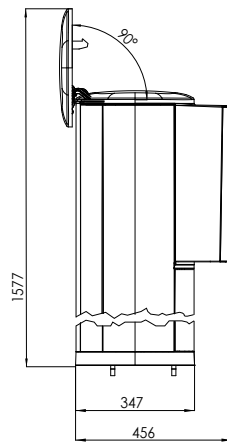
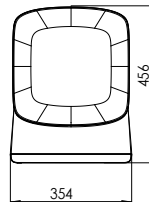
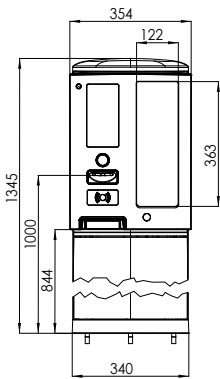
Efficiency Increase with Quality

- Optimized Service Planning
Great capacities and intelligent systems reduce your service efforts.
- Elaborated Technology
Touch-free RFID and barcode technology guarantee the highest level of reliability and low follow-up costs.

Save Money and Protect the Environment

- Minimize Your Power Usage
Situational energy saving modes and no heating above -20 °C (-4 °F) stand for a high energy efficiency.
- Recyclable Materials
Resource-efficient due to a high degree of reusability.

all dimensions in mm
all dimensions without options



Features

Design/Construction

- Unique design based on aluminum and high-grade synthetics, complemented by optional, stylish light elements
- Modular, easy to maintain construction
- Flexible extension options ensure maximum investment protection
- Weather-proof, thanks to use of durable high-grade materials, such as aluminum
- Ethernet interface for efficient system integration
- Large installation space for add-on modules (e.g., PIN pad, credit card reader, etc.)

Operation

- Intuitive user interaction helps to ensure very high processing rates

Green Efficiency

- Optimised for low power consumption; without Coder no heating required down to $-20\text{ }^{\circ}\text{C}$ ($-4\text{ }^{\circ}\text{F}$)
- Materials provide high degree of re-usability

Options

Design/Construction

- LED light bar serves as a stylish, illuminated eye-catcher
- Housing available in custom colors

Ticket Processing

- Coder Unlimited ensures flexible ticket processing
- Coder Basic enables cross-wise bar code ticket processing and punch-hole validation
- RFID module for reading and encoding 13 MHz keycards
- Double ticket intake (up to 2×7000 tickets, depending on ticket material and coder type) with automatic data carrier management

- Large ticket collecting box (holds approx. 3000 tickets)
- Print@Home scanner with special optical array for paper tickets and Smartphones; supports various formats
- Receipt printer for entire credit card solution
- Barcode ticket insert reader for 'classic' ticketing

Communication

- Analog intercom
- Integrated digital intercom (Ethernet or 2-Wire)
- Bi-directional (i. e., duplex) video communication (solution includes camera hardware)

Display

- Bright high-resolution graphics display ensures good readability under any light conditions; supports clear, vivid display of commercials and videos (with automatic brightness adjustment); 800×480 pixels
- Outdoor capable touch screen for additional Parking Column control functions (can be operated while wearing protective gloves)
- Sophisticated display modes support various applications and design options
- Illuminated control elements
- Visual and acoustic feedback provides additional user support

Accessories

- Locking system with mechanical or electronic locks, supports configurable access permissions
- Various contact and interface extensions to suit a wide range of requirements
- Heating and cooling for extreme ambient temperatures
- Infofield in the front
- AFILS Acoustic support for clear intelligibility
- Advertising panel
- Lane signal

Technical Specifications

Dimensions	354 mm × 1345 mm × 456 mm (B × H × T) without options
Weight	approx. 30 kg
Operating voltage	100-240 V $\pm 10\%$ / 50-60 Hz
Coding units	Coder Unlimited or Coder Basic
Operating temperature with Coder	$0\text{ }^{\circ}\text{C}$ ($32\text{ }^{\circ}\text{F}$) to $+50\text{ }^{\circ}\text{C}$ ($122\text{ }^{\circ}\text{F}$) in shade; $+40\text{ }^{\circ}\text{C}$ ($104\text{ }^{\circ}\text{F}$) under sun exposure
Operating temperature without Coder	$-20\text{ }^{\circ}\text{C}$ ($-4\text{ }^{\circ}\text{F}$) to $+50\text{ }^{\circ}\text{C}$ ($122\text{ }^{\circ}\text{F}$) in shade; $+40\text{ }^{\circ}\text{C}$ ($104\text{ }^{\circ}\text{F}$) under sun exposure
Operating temperature with additional cooling	up to $+50\text{ }^{\circ}\text{C}$ ($122\text{ }^{\circ}\text{F}$) under sun exposure
Operating temperature with additional heater	down to $-30\text{ }^{\circ}\text{C}$ ($-22\text{ }^{\circ}\text{F}$)
Operating temperature with additional heater big	down to $-40\text{ }^{\circ}\text{C}$ ($-40\text{ }^{\circ}\text{F}$)
Max. ambient humidity	90 % (non-condensing)
Support stand color	Brushed, anodized aluminum
Cover color	RAL 7037 Dusty Grey (varnished plastic)
Panel color	RAL 7021 Black Grey (varnished plastic)
Declarations / Certifications	CE, FCC, IC, $c_{NRTL_{US}}$
Degree of protection based on IEC 60529	IP43
System requirements	Parking.Logic V07 or higher