

BioStation 3

The New Door Access Experience



SUPrema
SECURITY & BIOMETRICS



Overview

BioStation 3 sets a new standard in access control, providing a new door access experience that enables improved security across all doors, for organizations of all sizes. This terminal is smaller than previous model, yet it has the largest variety of features.

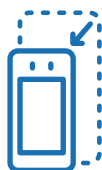
With highly advanced facial recognition, access credentials and usability features, BioStation 3 makes it easier than ever to safely, securely and conveniently protect an organization's physical security and users' personal data.



Multiple Contactless
Credentials



Safely Protect Users'
Personal Data



47% Reduction in Size and
Simple Installation



Connect Anytime and
Anywhere with VoIP Intercom



Multiple Contactless Access Methods

BioStation 3 provides multiple credential options. Choose from the most convenient authentication methods — all contactless and perfectly compatible with a post-pandemic world.

Facial Recognition



Mobile Access



QR and Barcode*

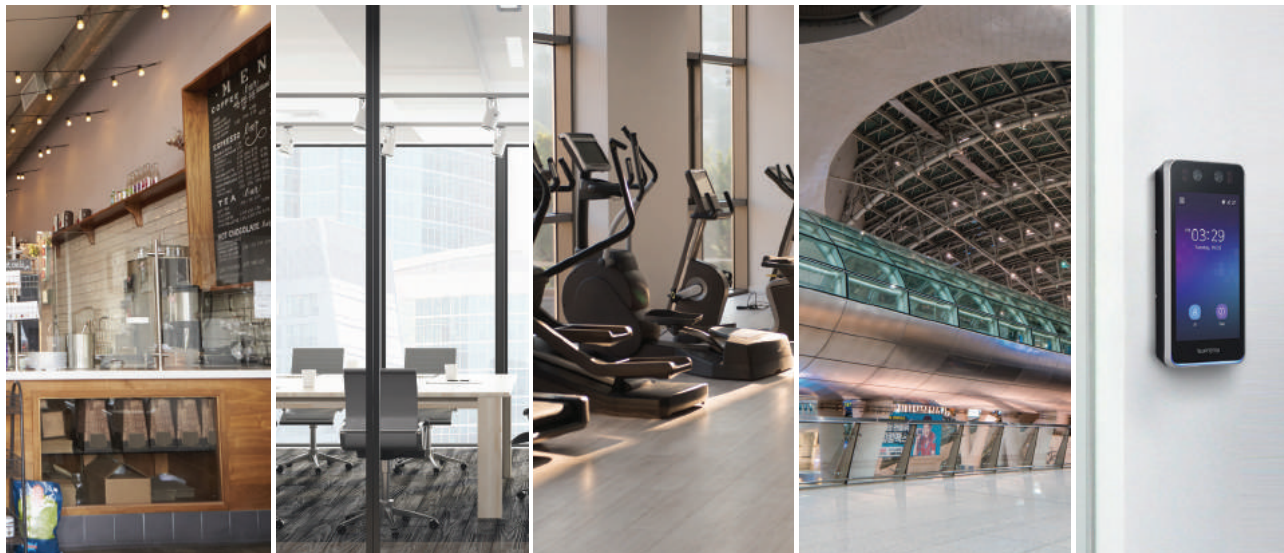
*Available by the end of 2022



RFID Card

Perfect for Any Door, Any Business

BioStation 3 is easy to install and scale in any environment, from small offices to massive enterprise buildings. It features a 47% size reduction compared to Suprema's previous bestselling facial recognition terminal, FaceStation F2.

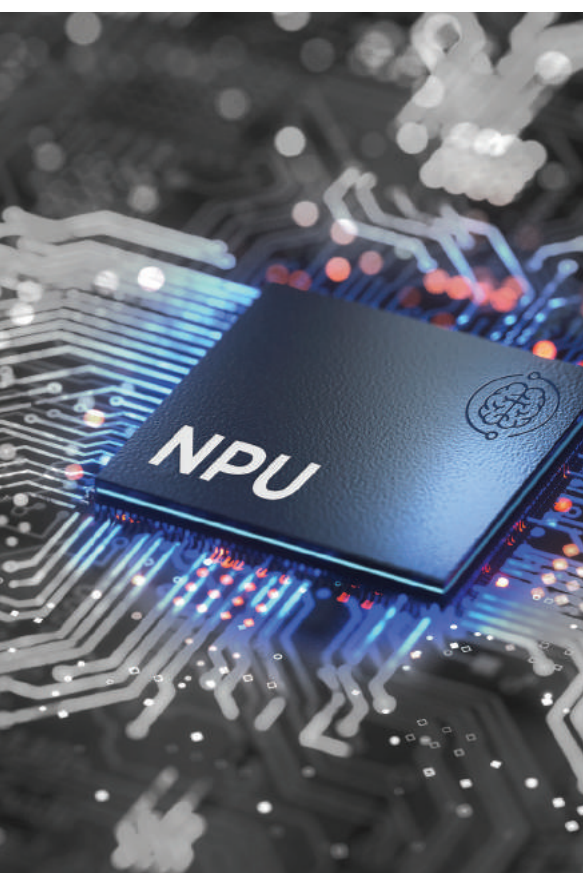


- Slim and compact design
- Less wiring and quick installation through Wi-Fi and POE+ support
- Simple to add on new features via custom USB host connecting to SIM Slot, RS232, etc.
- Suitable for indoor and outdoor environments — the terminal is rated IP65 and IK06*

*Refer to the installation guide for details



Fast and Smart AI Optimized for Facial Recognition Access



Suprema took its facial recognition technology to the next level. BioStation 3 is a high-tech edge device that can run AI algorithm locally. It uses an NPU, or Neural Processing Unit, to maximize the performance of its AI engine. Combined with Suprema's domain knowledge and experience as a two-decade access control leader, BioStation 3's NPU-optimized AI algorithm offers the highest standards in facial recognition accuracy and speed.



Accurately and rapidly recognize moving faces in high-traffic areas



Use dynamic face templates to increase matching performance with faces wearing masks, glasses, hats, beards, different hairstyles, etc.



Detect fake faces, images and photos

The Highest Level of Privacy Protection

BioStation 3 takes data protection very seriously.

- ISO/IEC 27001 certified to protect privacy and biometric data
- Designed to comply with GDPR, one of the strictest privacy regulations
- Embedded with Secure Element(SE) to prevent cyber-attacks
- Completed penetration testing through a verified institution
- Provided with 'Face Template on Mobile'* credential

*Available by the end of 2022



What is 'Face Template on Mobile'?

– Own Your Own Data

Suprema's exclusive authentication method 'Face Template on Mobile' lets users enroll into an access control system and store their face profile directly on their own mobile devices. This gives the users complete control over their own ID and their privacy. Users' biometric data is not stored in company databases.

Easy Communication Across All Access Points

BioStation 3 enables integrated management over an entire access control system.

- Communicate seamlessly with all doors via VoIP Intercom
- Enable video monitoring via RTSP(Real Time Streaming Protocol)



Specifications

Model Name		BS3-DB	BS3-APWB	
Biometric		Face		
Credential	RF Option	125kHz EM & 13.56MHz MIFARE, MIFARE Plus, DESFire EV1/EV2 ¹ , FeliCa	125kHz EM, HID Prox & 13.56MHz MIFARE, MIFARE Plus, DESFire EV1/EV2 ¹ , FeliCa, iCLASS SE/SR/Seos	
	RF Read Range ²	EM/HID iCLASS/MIFARE: 30 mm, HID Prox/DESFire: 25 mm, FeliCa: 15 mm		
	Mobile	NFC, BLE		
	Barcode and QR code	Supported ³		
General	CPU	1.5GHz Quad Core		
	Memory	32GB Flash + 4GB RAM		
	Crypto Chip	Supported		
	LCD Type	5.5" IPS color LCD		
	LCD Resolution	720 x 1280 pixels		
	Sound	16bit		
	Operating Temperature	-20°C ~ 50°C (-4°F ~ 122°F)		
	Operating Humidity	0%~80%, non-condensing		
	Camera	2MP x 2EA (Visual, IR)		
	Dimension (W x H x D)	82.5mm x 171mm x 23.4mm		
	Weight	Device: 370g	Device: 380g	
		Bracket (Including washer and bolt): 90g		
	Ingress Protection (IP)	IP65		
	Vandal Proof (IK)	IK06		
Certificates	KC, CE, UKCA, FCC, RCM (Compliance: RoHS, REACH, WEEE)			
Face	Recognition Distance	0.6 ~ 1.0 m (23.6"~39")		
	Recognition Height	1.4 ~ 1.9 m (55.1"~74.8")		
	Matching Speed	Less than 0.3 sec		
	Live Face Detection (Anti-Spoofing)	Supported		
Capacity	Max. User	100,000 ⁴		
	Max. Credential (1:N)	Face: 50,000		
	Max. Credential (1:1)	Face: 100,000 / Card: 100,000 / PIN: 100,000		
	Max. Text Log	5,000,000		
	Max. Image Log	50,000		
Interface	Ethernet	Supported (10/100/1000 Mbps, automatic MDI/MDI-X)		
	Wi-Fi	-	Supported (802.11 b/g/n 2.4GHz)	
	RS-485	1ch Host or Slave (Selectable)		
	Wiegand	1ch Input and 1ch Output		
	TTL Input	3ch Inputs		
	Relay	1 Relay		
	PoE+	-	Supported (IEEE 802.3 at compliant)	
	Intercom	Supported		
	USB	USB 2.0 (Host)		
	Extended USB	Supported		
	Tamper	Supported		
Power	DC 12 V 2.5A, DC 24 V 1.2A			

¹ DESFire EV2 cards are supported by having backward compatibility of DESFire EV1 cards. CSN and smart card functions are compatible with BioStation 3.
² RF read range will vary depending on the installation environment. ³ Requires a separate license. ⁴ The number of users registered without having any credential data.